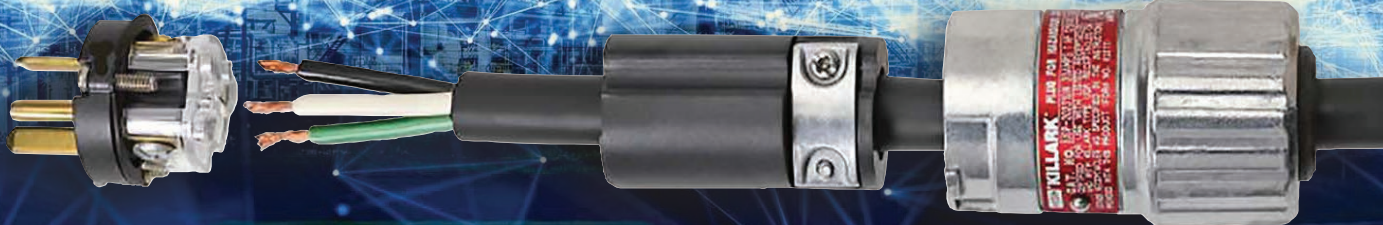


ACCEPTOR[®]

Quick Wire Series

Connectors



FREQUENTLY ASKED QUESTIONS

Q: Will the new Quick Wire products work with the existing non-Quick Wire products?

A: Yes, all existing Killark Acceptor products (as well as existing competitive devices that intermate) will work with the new Quick Wire products.

Q: What product lines does this change affect?

A: The **Quick Wire** product line enhancement affects the entire Killark Acceptor Series line of NEMA-Bladed style products, including plugs, receptacles, and in-line connector receptacles. Applicable product series include the UGR, UGRC, UGRP, UGRS, and UGRGF Series of receptacles and the UGP Series of plugs.

Q: Can I use a standard plug (industrial or otherwise rated) for installation into a Quick-Wire receptacle or in-line connector?

A: The entire Acceptor line of plugs, receptacles, and in-line connectors have harsh or hazardous ratings. As such, there are design elements that prevent the utilization of non-similarly rated components from being used with them. **A standard plug or receptacle will not intermate properly with the corresponding device.**

Q: Can I “double-lug” the wiring terminals on the receptacles?

A: The National Electric Code specifies that only one conductor/wire may be installed into a wiring lug, unless the lug has been specifically tested/rated for that type of installation. When wiring multiple receptacles on the “load side” of a branch circuit, it is common practice to wire multiple receptacles inline on the same circuit. The Quick Wire receptacle design allows for two wires (input and output) on each terminal, allowing for properly feeding power to the next receptacle in the circuit, without having to use additional wiring or potentially violating code practices by double lugging.

Q: Are Quick Wire devices considered “Factory-Sealed”?

A: Many of the series of Acceptor devices are considered “Factory-Sealed” and therefore do not require external seals for normal installations. However, some configurations have alternate constructions which will require an external seal (please refer to the installation instructions for the specific series to verify).



Are You Following Us?



AcceptorQW_FAQ 03-20 © Killark, 2020

KILLARK[®]

www.hubbell-killark.com



Harsh & Hazardous